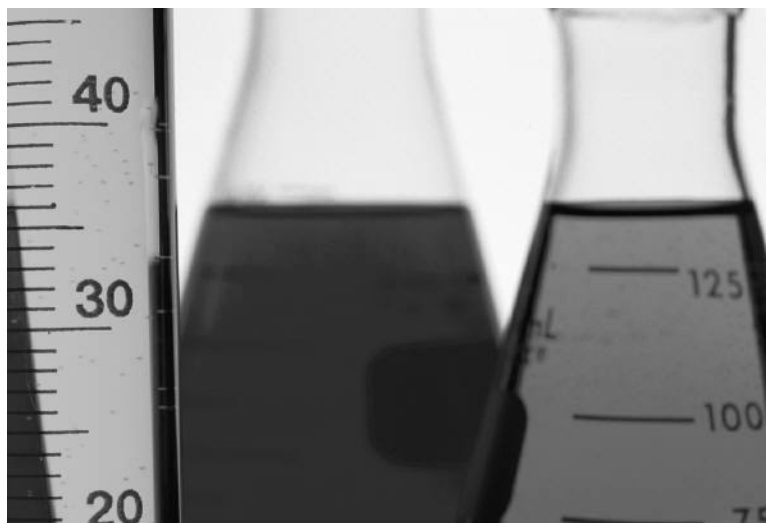


2016-2017 Science Fair Handbook



Name: _____

Science Fair Schedule

Week #	Due Date	Assignment
1	<i>Friday 12/02/16</i>	Complete Worksheet 1
2	<i>Started by Friday 12/09/16</i>	Complete Worksheets 2-3
3-5		Experiment at home <i>Complete at least 2 entries in your Experimental Notebook and 2 data entries in your graph each week.</i>
ALL OTHER WORK MUST BE DONE AT HOME;		
WRITE THE DATES COMPLETED HERE		After experimenting, Complete Worksheets 4-5
6		Create your science fair display/poster
7	TUESDAY, 01/17/2017	Present your science fair display

***May work with ONE partner who is
also in 6th grade at Paakuma'***

Worksheet 1

Choosing & Researching Your Project

Question: Using the list of science fair projects, what is the question you want to experiment to answer? Write the question here:

Approved:_____

Not Approved:_____

Materials: What materials will you need to complete your project?

Tri-fold display board;_____

Research: Find 1-2 resources that will help you understand your topic. Create a bibliography below for the resources.

Worksheet 2

Gathering Materials & Writing a Procedure

Hypothesis: *After* reading your research, what is your hypothesis (that is, what do you predict will happen as you experiment?)

Procedure: How will you conduct your experiment step-by-step?

Worksheet 3

Using a Graph to Gather Data

Data: What will you count or measure in your experiment?

Graph: Use this graph to collect data during your experiment.

Worksheet 4

Understanding Your Data

After you have finished experimenting, explain what happened in your experiment?

Worksheet 5

Writing Your Conclusion

Write the conclusion for your science fair project. What did you learn? Was your hypothesis correct? Why or why not?

Experimental Notebook

Date: _____

Observations:

Date: _____

Observations:

Date: _____

Observations:

Date: _____

Observations:

Date: _____

Observations:

Date: _____

Observations:

Date: _____

Observations:

Date: _____

Observations: